

Milos



Milos



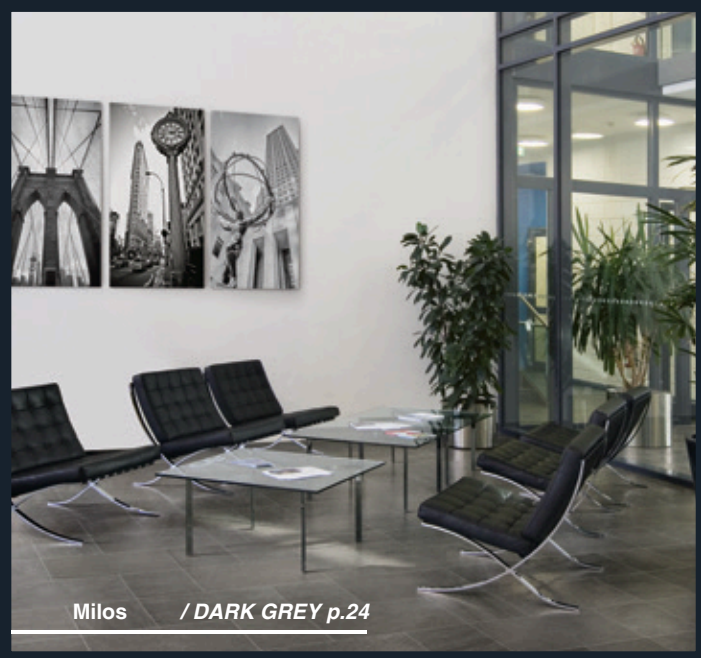
Milos / *WHITE* p.6



Milos / *SAND* p.12



Milos / *LIGHT GREY* p.18



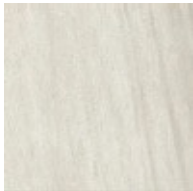
Milos / *DARK GREY* p.24



Milos / *NUT* p.30

colors

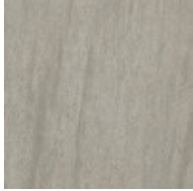
Milos / *WHITE*



Milos / *SAND*



Milos / *LIGHT GREY*



Milos / *DARK GREY*




Milos / *NUT*



With the option of using either a natural or grip finish, Milos is ideal for both walls and floors. The six sizes, available in rectified format also help to create clean and modern atmospheres.



A photograph of a volcanic eruption. A bright orange lava flow is visible in the center, surrounded by a large plume of white smoke or ash that rises into the air. The foreground shows dark, jagged volcanic rock formations and the dark blue water of the sea.

Milos is a color body porcelain tile inspired by the natural elegance of volcanic stone, a contemporary look designed to satisfy the most sophisticated aesthetic and architectonic tastes and requirements.

6

7

Milos / *WHITE*

8 | Milos



9



10

11

12"x12" *WHITE* . fireplace: 12"x24" *NUT*

12

13

Milos / *SAND*

14 | Milos



15



16



24"x24/ SAND

17



12"x24". 24"x24 SAND

18

19

Milos / *LIGHT GREY*



22

23

12"x24" LIGHT GREY



24

25

Milos / *DARK GREY*





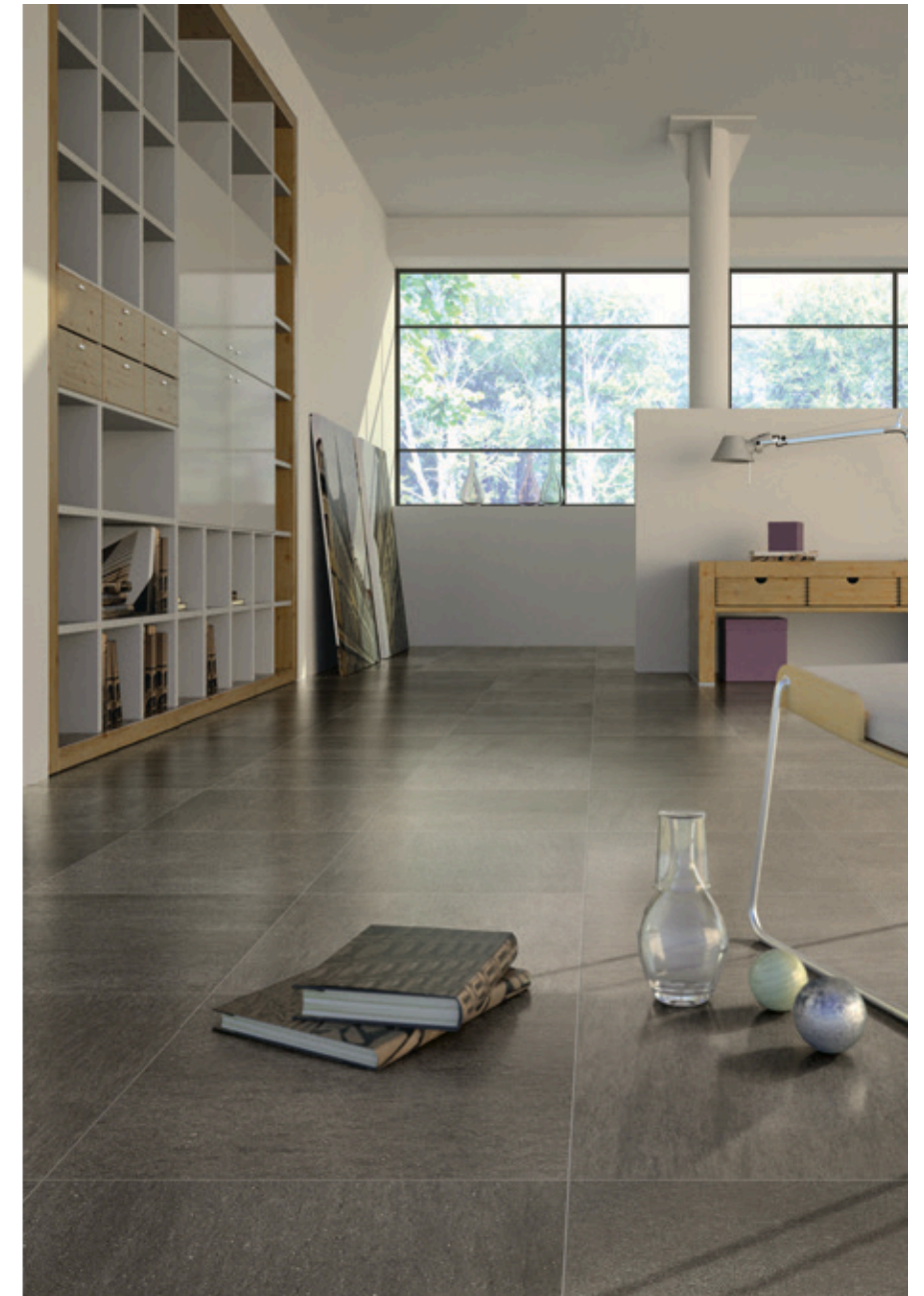
12"x12".12"x24'DARK GREY



30

31

Milos / *NUT*





12"x12". 12"x24" *NUT*

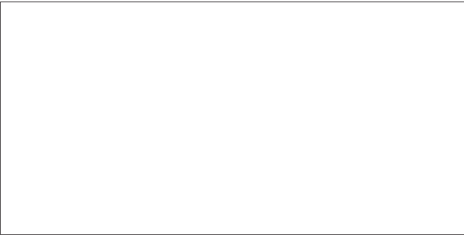


12"x24" *NUT*

SIZES & SHADE VARIATION

sizes:

24"x48"
Rectified



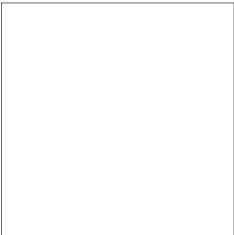
1096320 White
1096321 Sand
1096322 Nut
1096323 Light Grey
1096324 Dark Grey

12"x24"
Rectified



1096209 White
1096210 Sand
1096211 Nut
1096212 Light Grey
1096213 Dark Grey

24"x24"
Rectified



1096219 White
1096220 Sand
1096221 Nut
1096222 Light Grey
1096223 Dark Grey

12"x12"
Rectified

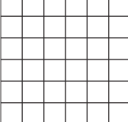


1096199 White
1096200 Sand
1096201 Nut
1096202 Light Grey
1096203 Dark Grey

Colors shown may vary from actual product.
Final selection should be made from actual product samples.

mosaics & trim pieces:

12"x12"
mosaic 2"x2"



1096164 White
1096165 Sand
1096166 Nut
1096167 Light Grey
1096168 Dark Grey

3"x12" Bullnose

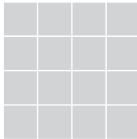


1096225 White
1096226 Sand
1096227 Nut
1096228 Light Grey
1096229 Dark Grey

6"x12" Cove Base *special order only*



1096230 White
1096231 Sand
1096232 Nut
1096233 Light Grey
1096234 Dark Grey



V1

UNIFORM
APPEARANCE
Differences among pieces from the same production run are minimal.



V2

SLIGHT
VARIATION
Clearly distinguishable differences in texture and/or pattern with similar colors.



V3

MODERATE
VARIATION
While the colors present on a single piece of tile will be indicative of the colors to be expected on the other tiles, the amount of colors on each piece will vary significantly.



V4

SUBSTANTIAL VARIATION
Random color differences from tile to tile, so that one tile may have totally different colors from that on other tiles. Thus, the final installation will be unique.



Technical Specifications

This product meets or exceeds all standards described in ANSI A137.1 & A137.3.
Este product cumple o exceed todos los estandares de ANSI A137.1 & A137.3.

	SPECS	TEST METHOD	INDUSTRY STANDARD	MILE®stone VALUES	
	WATER ABSORPTION	ASTM C373	≤0.5 %	≤0.5 %	
	SURFACE WEAR RESISTANCE	ANSI A137.1	Surface Wear-resistance properties of glazed vitreous and porcelain tiles.	ALL RESIDENTIAL / COMMERCIAL	
	CHEMICAL RESISTANCE	ASTM C650	A tile sample is placed in continuous contact with a variety of chemicals for 24 hours. Sample must show no visible defects.	NOT AFFECTED	
	D.C.O.F. AcuTest®	ANSI A326.3	INDOOR ≥0.42 WET	≥0.42 WET	
			OUTDOOR >0.55 WET	>0.55 WET 2CM & GRIP	
	STAIN RESISTANCE	ASTM C1378	Surfaces are exposed to staining agents for 24 hours followed by four cleaning procedures. Results are recorded post cleaning.	NOT AFFECTED	
	BREAKING STRENGTH GAUGED PORCELAIN	ASTM C1505	≥175 lbf	≥200 lbf	
	BREAKING STRENGTH	ASTM C648	≥275 lbf	≥300 lbf	
	BREAKING STRENGTH OUTDOOR 2CM	ASTM 1505	2000 lbf (10.9 kN)	≥2500 lbf	
	RESISTANCE TO FREEZE	ASTM C1026	A tile sample is subjected to repeated processes of freezing and thawing. Sample must show no visible defects.	RESISTANT	
	WARPAGE EDGE	ASTM C485	±0.40% or ±0.05 in (±1.8 mm)	± 0.40%	Rectified
	WARPAGE DIAGONAL	ASTM C485	±0.40% or ±0.07 in (±1.8 mm)	± 0.40%	Rectified
	WEDGING	ASTM C502	±0.25% or ±0.03 in (±0.8 mm)	± 0.25%	Rectified
	WARPAGE EDGE	ASTM C485	±0.50% or ±0.07 in (±1.8 mm)	± 0.50%	Calibrated
	WARPAGE DIAGONAL	ASTM C485	±0.50% or ±0.07 in (±1.8 mm)	± 0.50%	Calibrated
	WEDGING	ASTM C502	±0.50% or ±0.08 in (±2.0 mm)	± 0.50%	Calibrated
	THICKNESS	ASTM C499	Range: ± 0.04 in	≤0.04 in	

• Due to the inherent nature of fired porcelain tile, it is important to note that the coefficent of friction may vary within and between product runs.



35-02 Northern Blvd. Long Island City, NY 11101
www.hometilecenterofny.com
(718) 361-9401