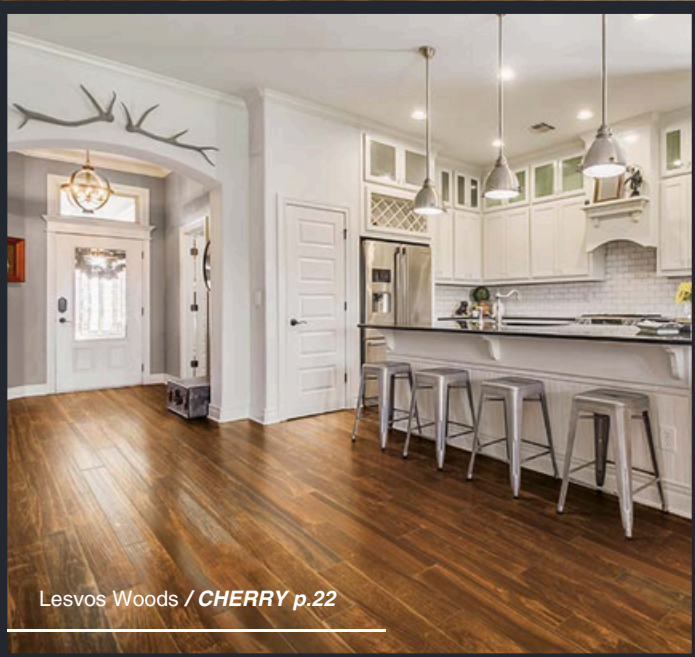
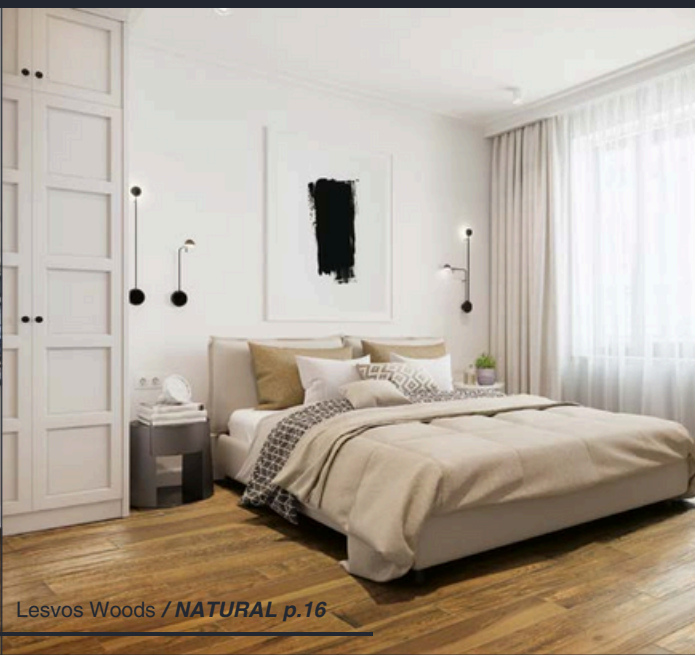
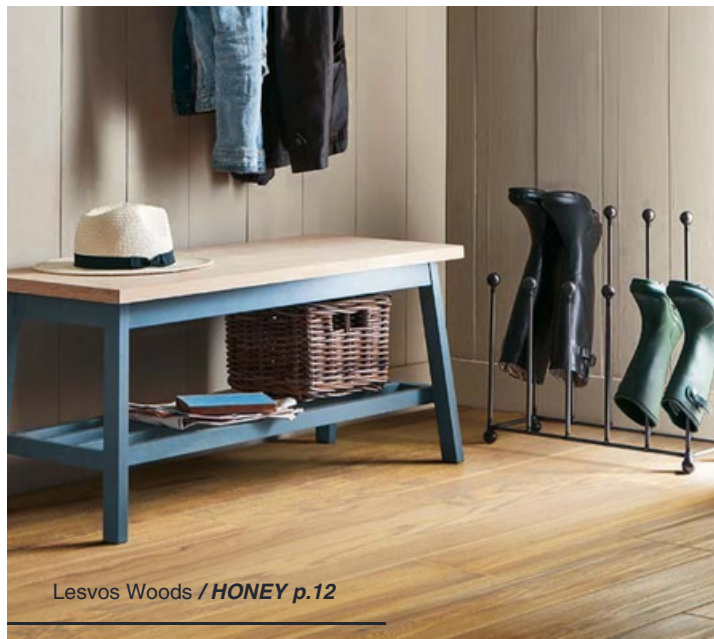


Lesvos Woods

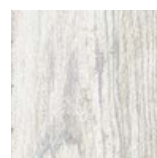




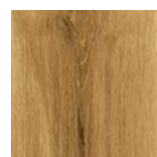
Lesvos Woods



colors



Lesvos Woods / **WHITE**



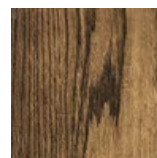
Lesvos Woods / **HONEY**



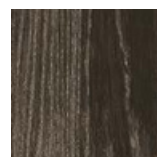
Lesvos Woods / **NATURAL**



Lesvos Woods / **CHERRY**



Lesvos Woods / **VINTAGE**

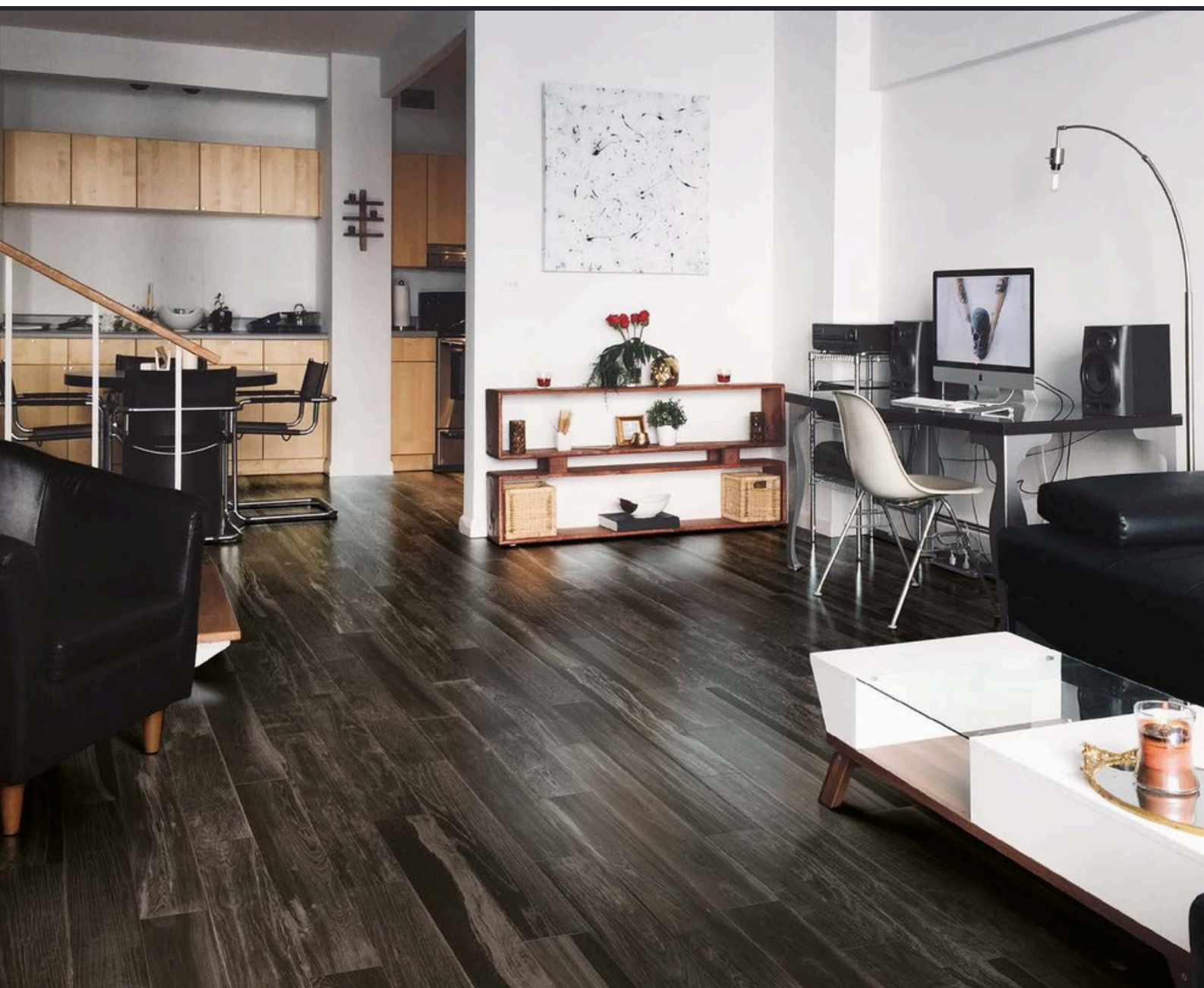


Lesvos Woods / **BLACK**

Lesvos Woods / FINE PORCELAIN STONEWARE MADE IN THE USA.

Lesvos Woods

The Lesvos Woods collection is a wood look porcelain tile imagining of hand-finished Lesvos Woods. Rich, dramatic tones and the artful recreation of the knots, grains and texture of finished natural wood flooring are presented in six color options ranging from cool white to bolder brown and chocolate shades.

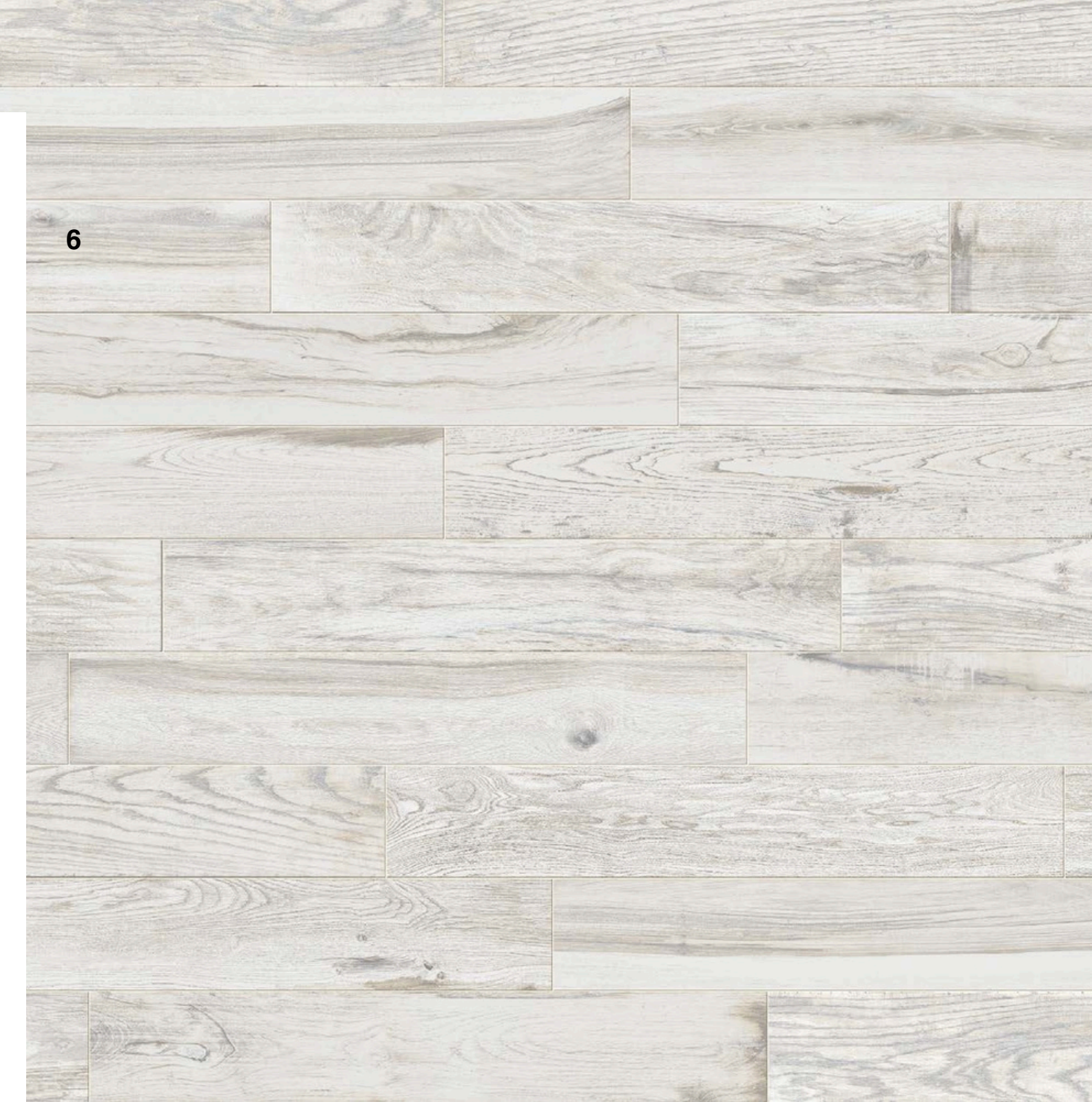






The refined look of Lesvos Woods is suitable for any project where the look of hardwood is desired, but easy maintenance is required.

6





Lesvos Woods / *WHITE*

Lesvos Woods





10



6"x36" / WHITE



12





13

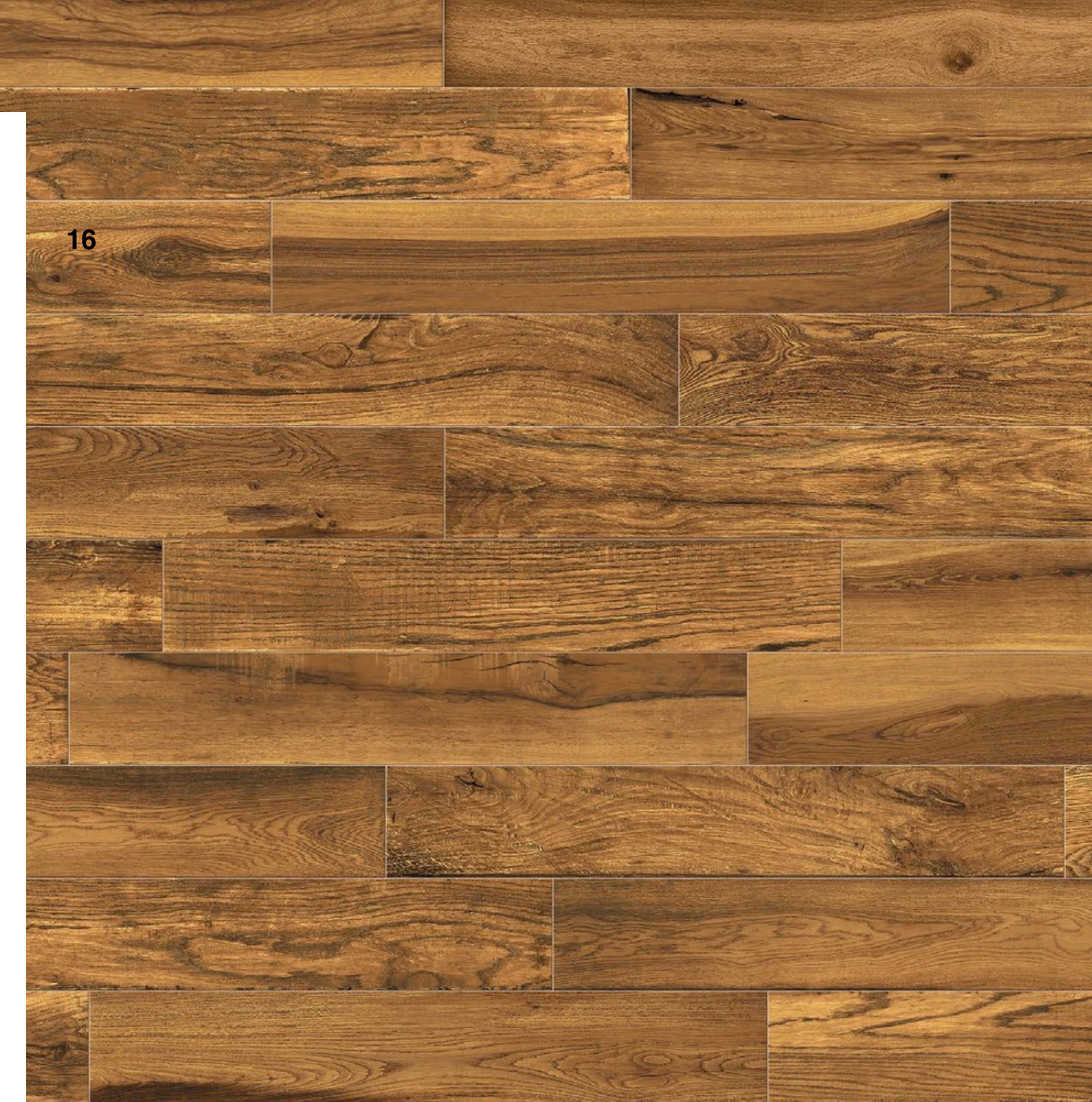
Lesvos Woods / ***HONEY***

Lesvos Woods





16



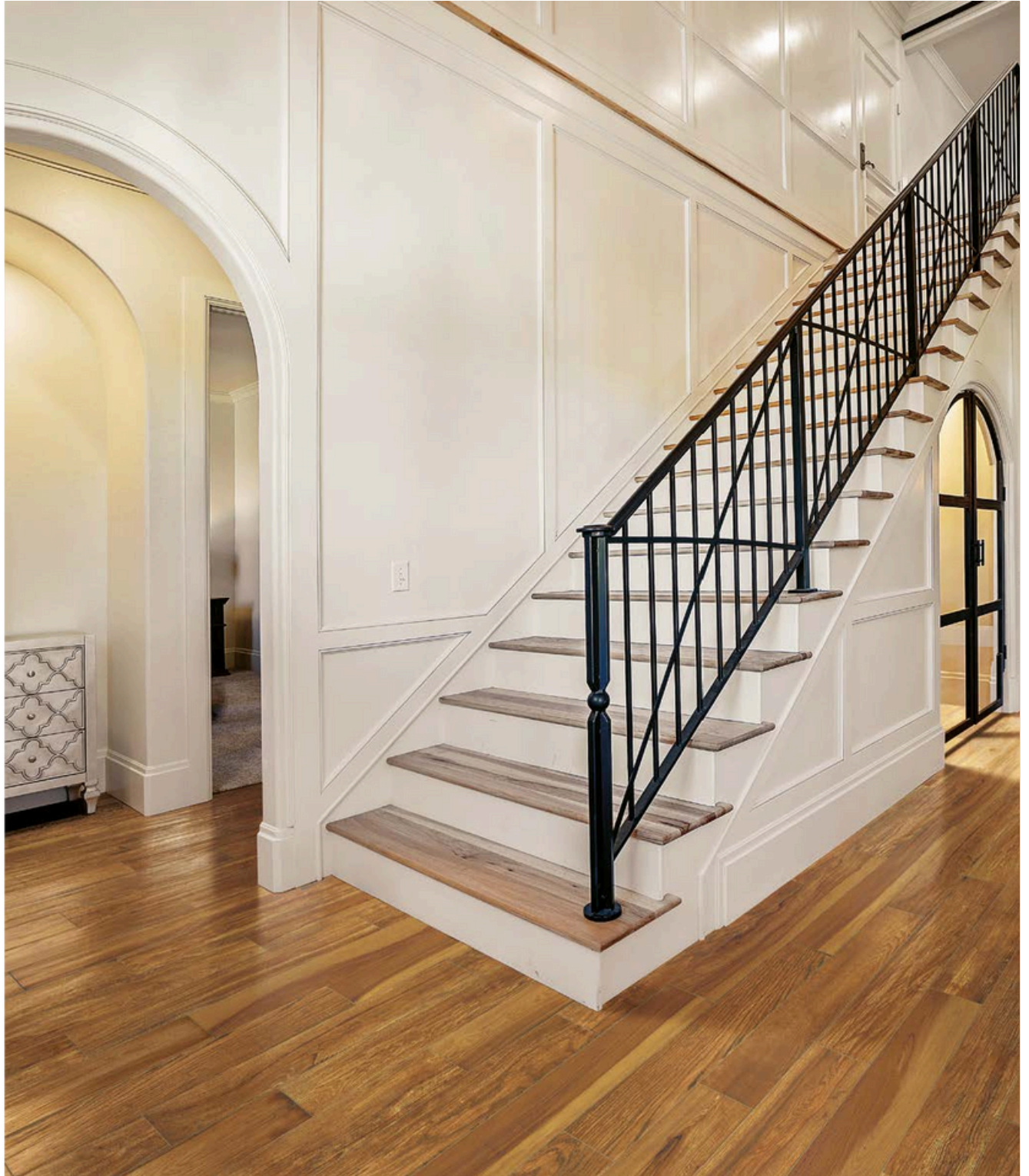


17

Lesvos Woods / ***NATURAL***

Lesvos Woods



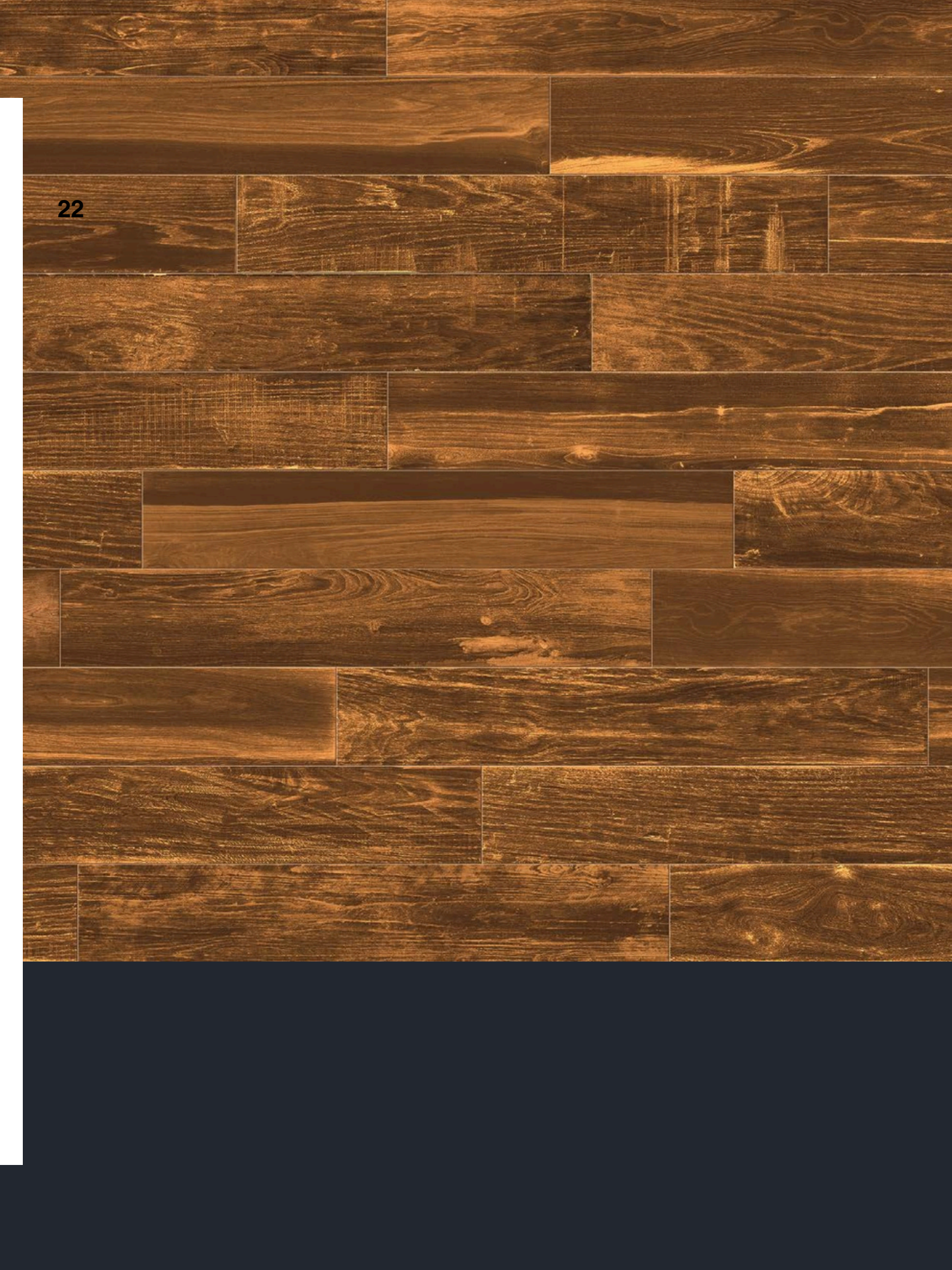


20



6"x36" / NATURAL





Lesvos Woods / ***CHERRY***

Lesvos Woods

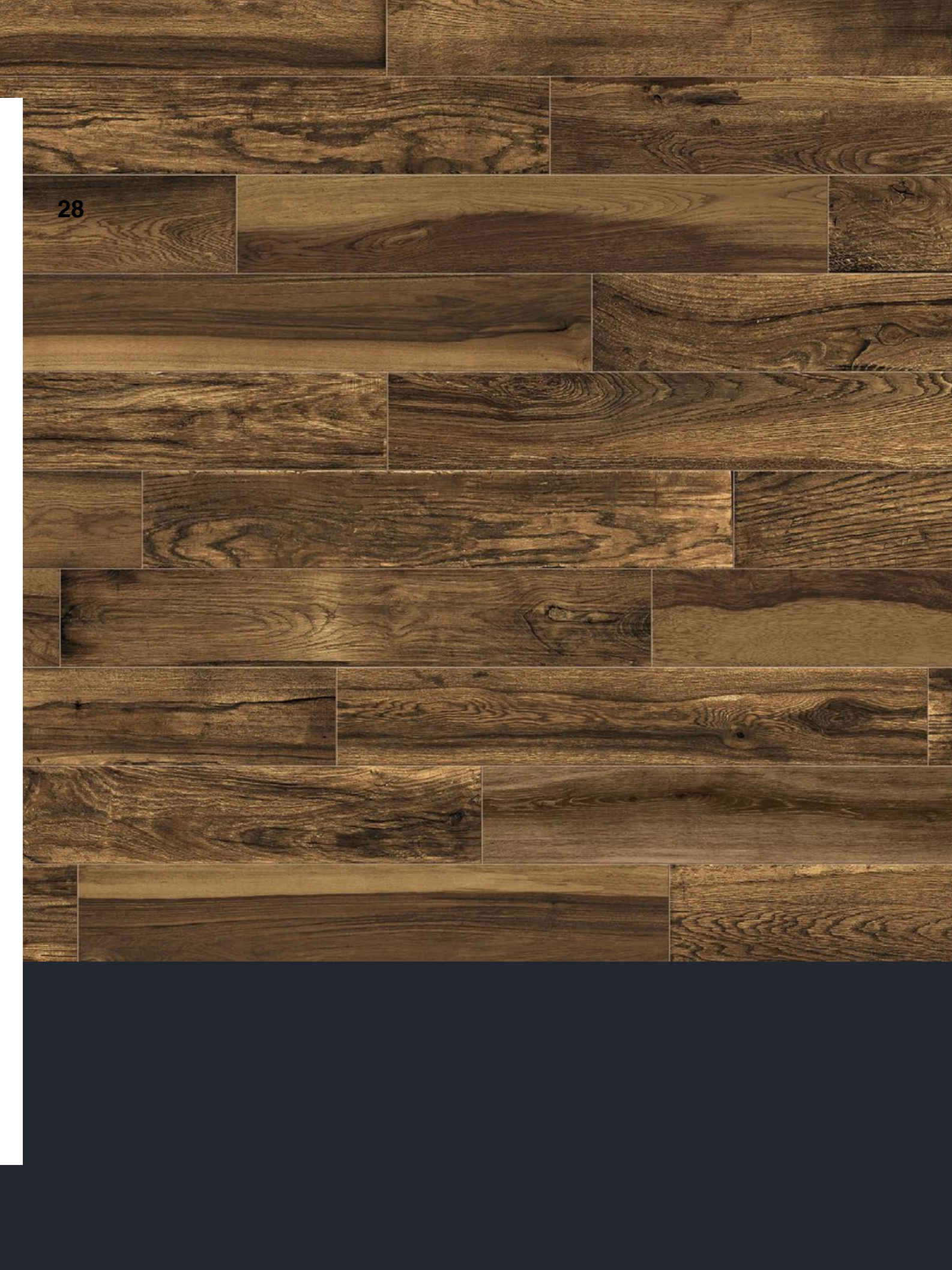








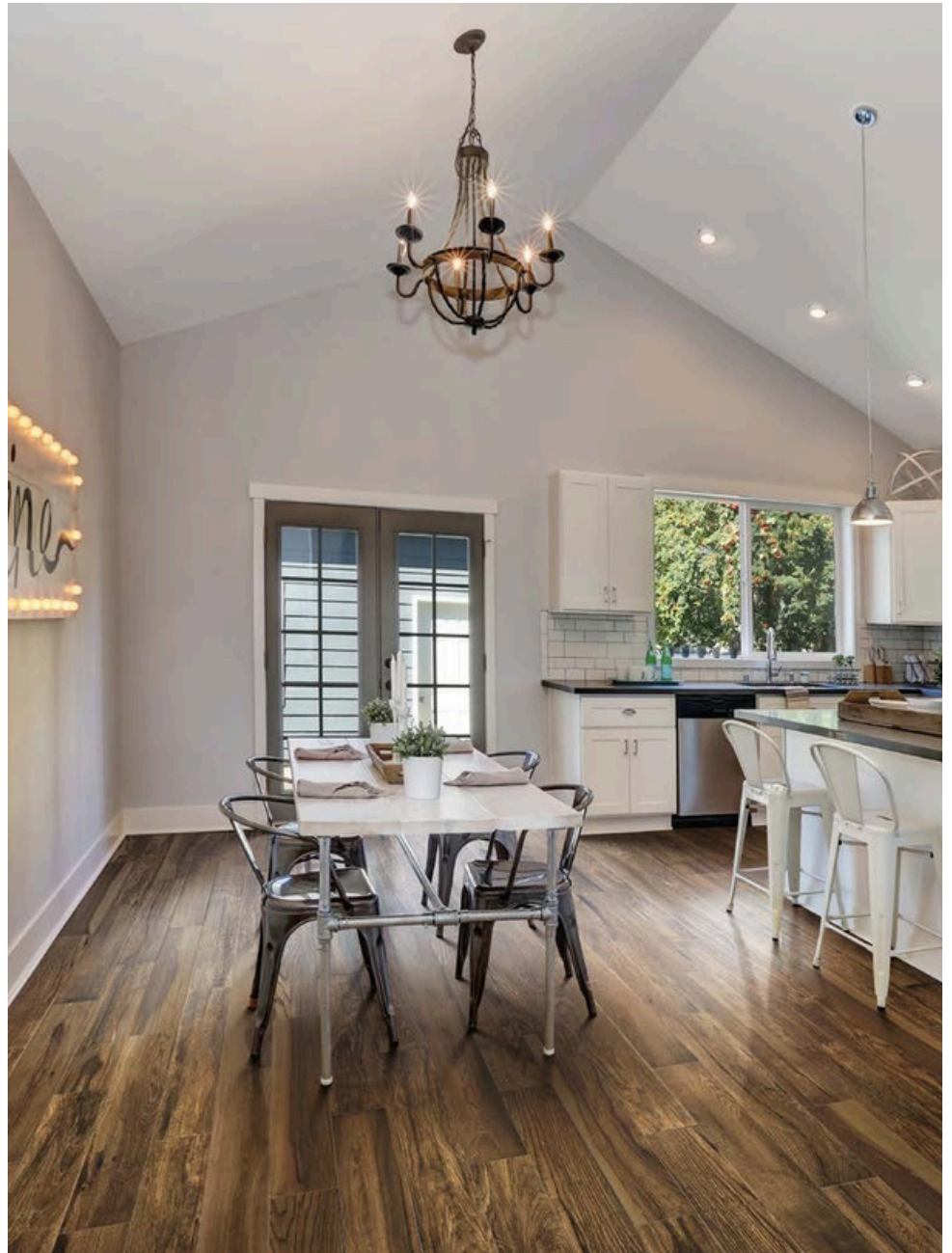
28



Lesvos Woods / ***VINTAGE***

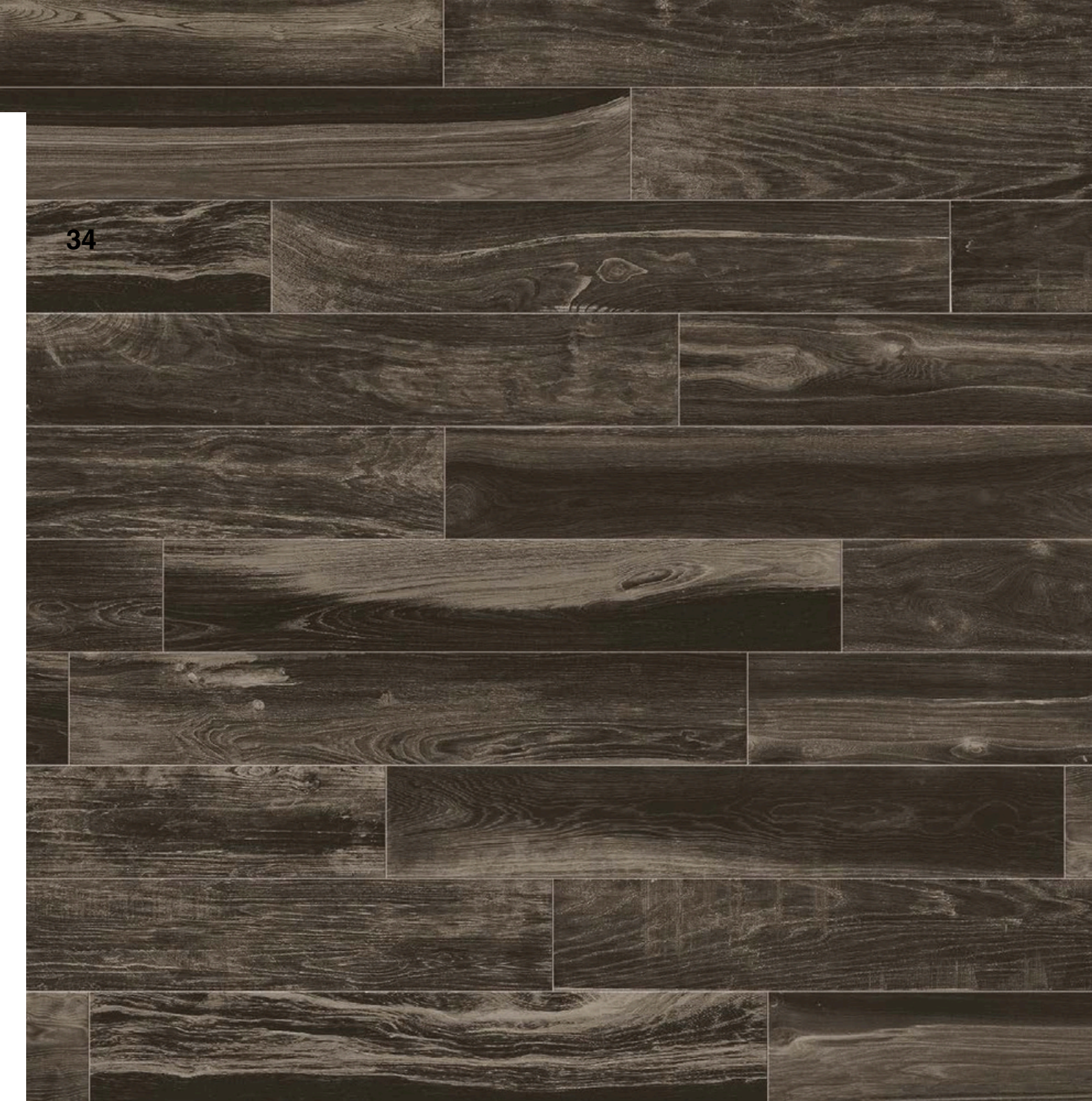
Lesvos Woods











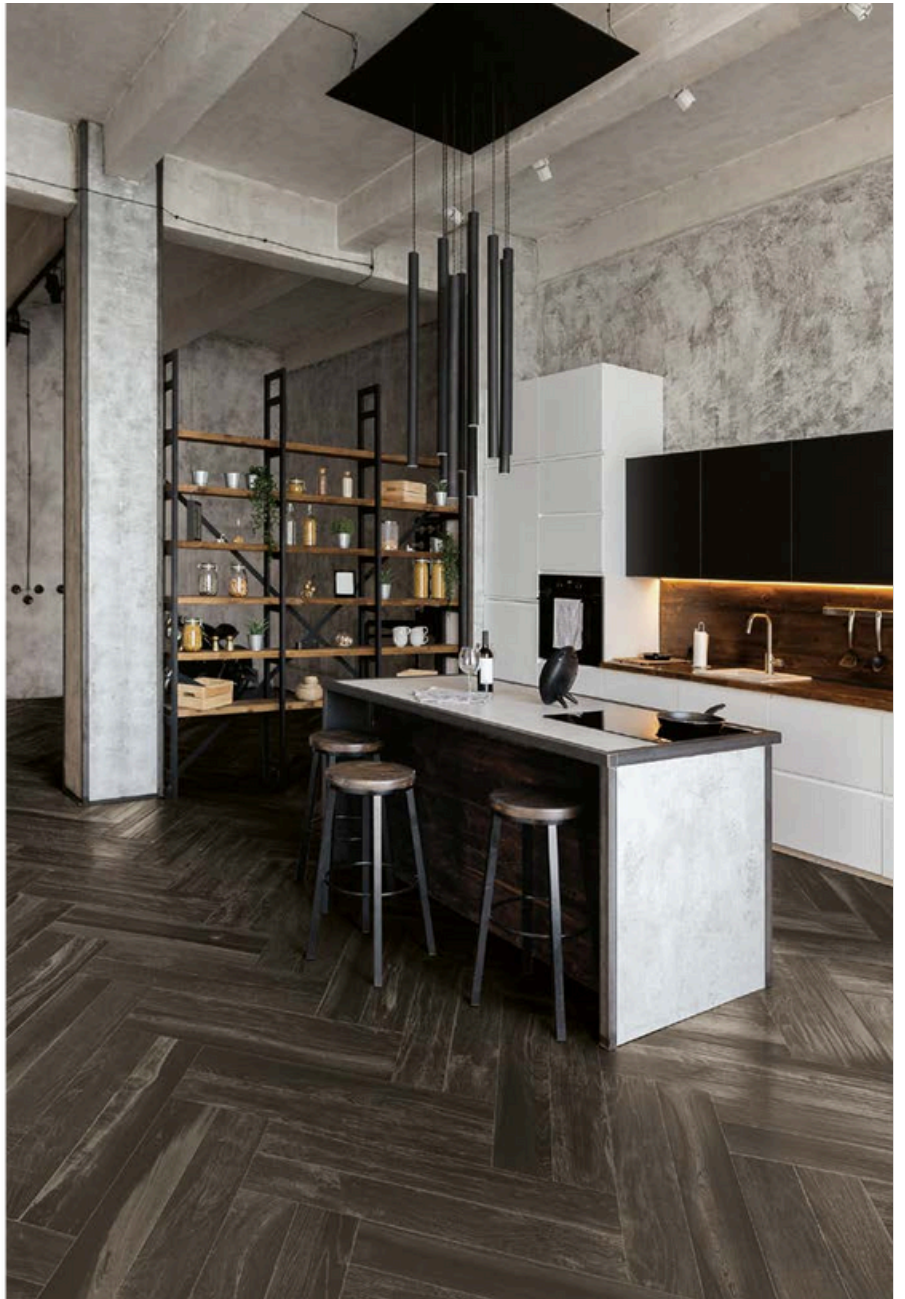


35

Lesvos Woods / ***BLACK***

Lesvos Woods





38

6"x36" / **BLACK**





SIZES & SHADE VARIATION

sizes:

6"x36"

Pressed/*Glossy*



1101633 Black

1101634

White

1101635

Cherry

1101636

Natural

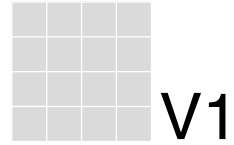
1101637

Honey

1101638

Vintage

Colors shown may vary from
actual product.
Final selection should be made
from actual product samples.



V1

UNIFORM APPEARANCE
Differences among pieces from the same production run are minimal.



V2

SLIGHT VARIATION
Clearly distinguishable differences in texture and/or pattern with similar colors.



V3

MODERATE VARIATION
While the colors present on a single piece of tile will be indicative of the colors to be expected on the other tiles, the amount of colors on each piece will vary significantly.



V4

SUBSTANTIAL VARIATION
Random color differences from tile to tile, so that one tile may have totally different colors from that on other tiles. Thus, the final installation will be unique.



Technical Specifications

This product meets or exceeds all standards described in ANSI A137.1 & A137.3.

Este product cumple o exceed todos los estandares de ANSI A137.1 & A137.3.

	SPECS	TEST METHOD	INDUSTRY STANDARD	MILE®stone VALUES	
	WATER ABSORPTION	ASTM C373	≤0.5%	≤0.5%	
	SURFACE WEAR RESISTANCE	ANSI A137.1	Surface Wear-resistance properties of glazed vitreous and porcelain tiles.	ALL RESIDENTIAL / COMMERCIAL	
	CHEMICAL RESISTANCE	ASTM C650	A tile sample is placed in continuous contact with a variety of chemicals for 24 hours. Sample must show no visible defects.	NOT AFFECTED	
	D.C.O.F. AcuTest®	ANSI A326.3	INDOOR ≥0.42 WET	≥0.42 WET	
			OUTDOOR >0.55 WET	>0.55 WET 2CM & GRIP	
	STAIN RESISTANCE	ASTM C1378	Surfaces are exposed to staining agents for 24 hours followed by four cleaning procedures. Results are recorded post cleaning.	NOT AFFECTED	
	BREAKING STRENGTH GAUGED PORCELAIN	ASTM C1505	≥175 lbf	≥200 lbf	
	BREAKING STRENGTH	ASTM C648	≥275 lbf	≥300 lbf	
	BREAKING STRENGTH OUTDOOR 2CM	ASTM 1505	2000 lbf (10.9 kN)	≥2500 lbf	
	RESISTANCE TO FREEZE	ASTM C1026	A tile sample is subjected to repeated processes of freezing and thawing. Sample must show no visible defects.	RESISTANT	
	WARPAGE EDGE	ASTM C485	±0.40% or ±0.05 in (±1.8 mm)	± 0.40%	Rectified
	WARPAGE DIAGONAL	ASTM C485	±0.40% or ±0.07 in (±1.8 mm)	± 0.40%	Rectified
	WEDGING	ASTM C502	±0.25% or ±0.03 in (±0.8 mm)	± 0.25%	Rectified
	WARPAGE EDGE	ASTM C485	±0.50% or ±0.07 in (±1.8 mm)	± 0.50%	Calibrated
	WARPAGE DIAGONAL	ASTM C485	±0.50% or ±0.07 in (±1.8 mm)	± 0.50%	Calibrated
	WEDGING	ASTM C502	±0.50% or ±0.08 in (±2.0 mm)	± 0.50%	Calibrated
	THICKNESS	ASTM C499	Range: ± 0.04 in	≤0.04 in	

- Due to the inherent nature of fired porcelain tile, it is important to note that the coefficient of friction may vary within and between product runs.



35-02 Northern Boulevard, Long Island City, N.Y. 11101
www.hometilecenterofny.com
(718) 361-9401